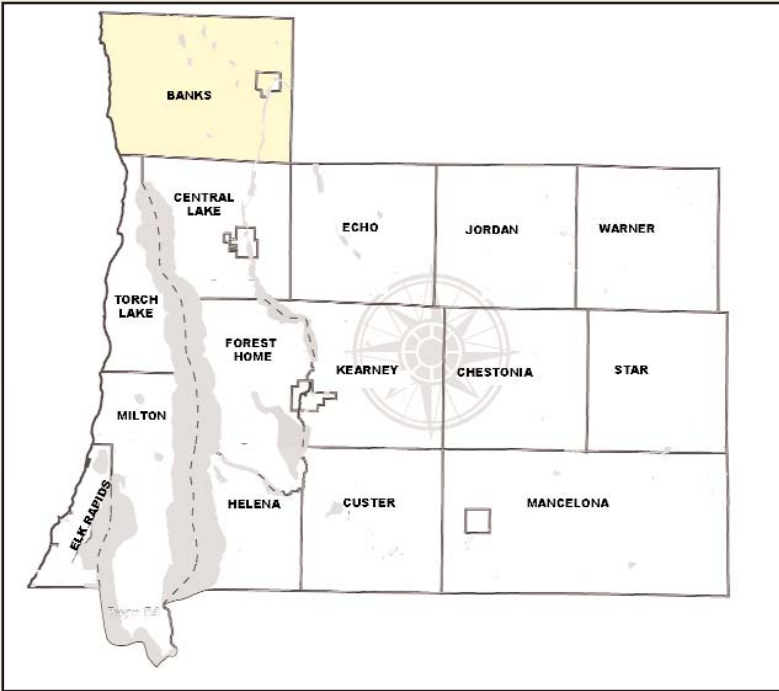


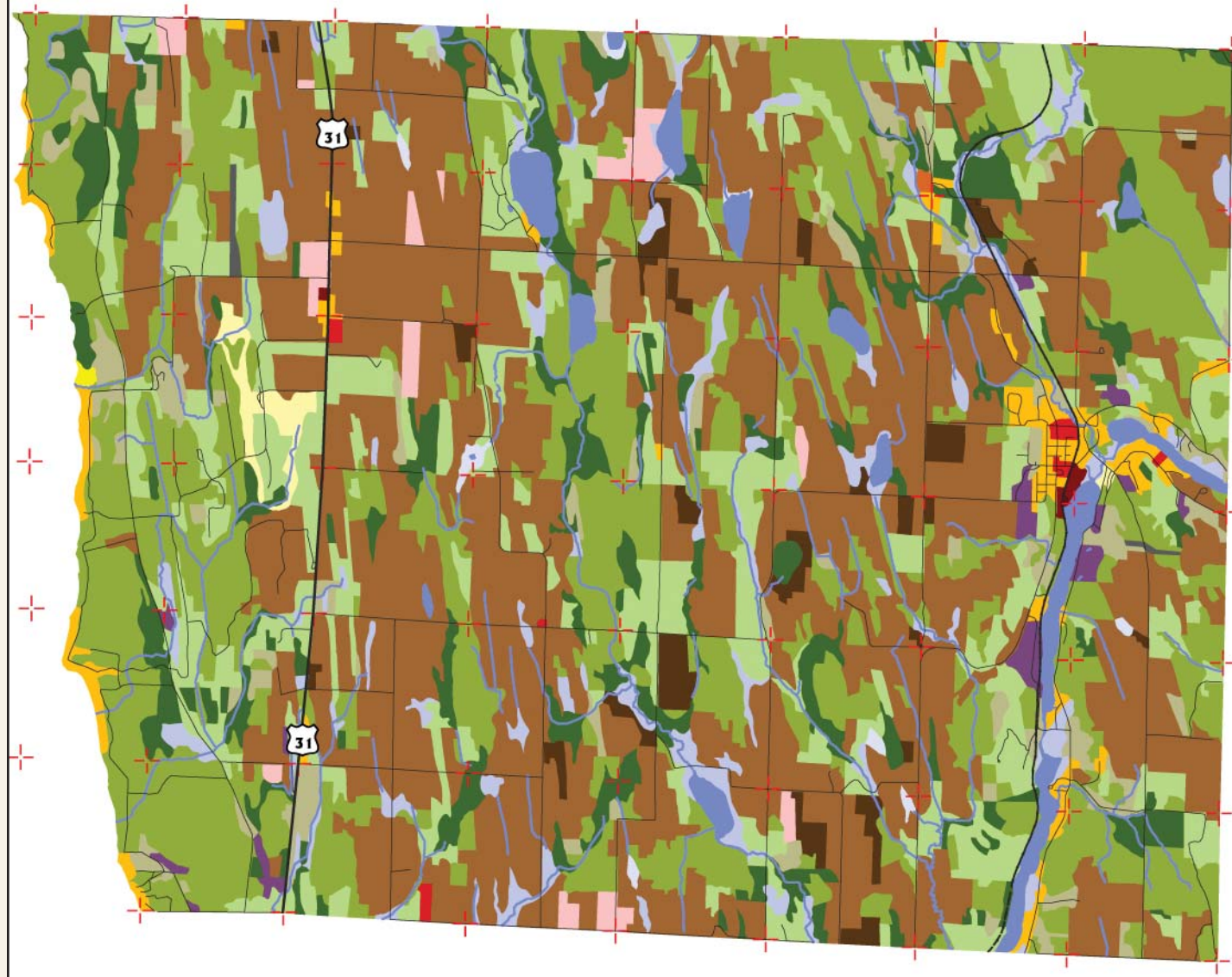
BANKS TOWNSHIP



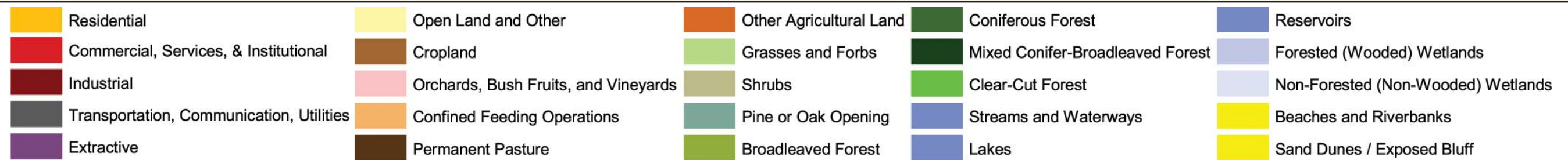
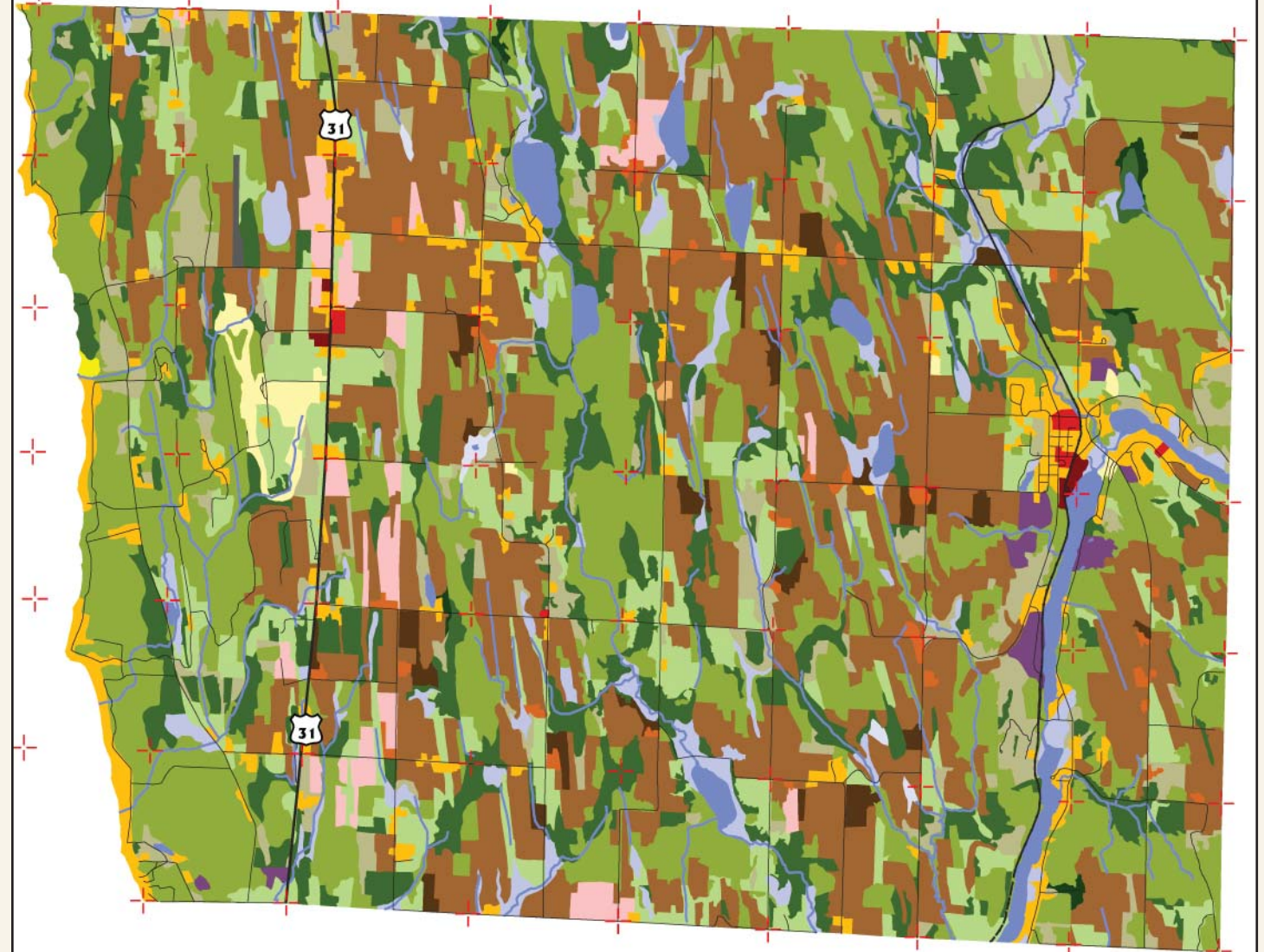
POPULATION TRENDS		
1980	1990	2000
1515	1513	1813
LAND USE TRENDS (ACRES)		
	1978	1998
Urban & Built Up	982	1723
Agricultural Land	12268	9601
Grass & Shrub Lands	4867	4588
Forest Land	9647	11819
Water	550	578
Wetlands	1015	1016
Barren	11	11



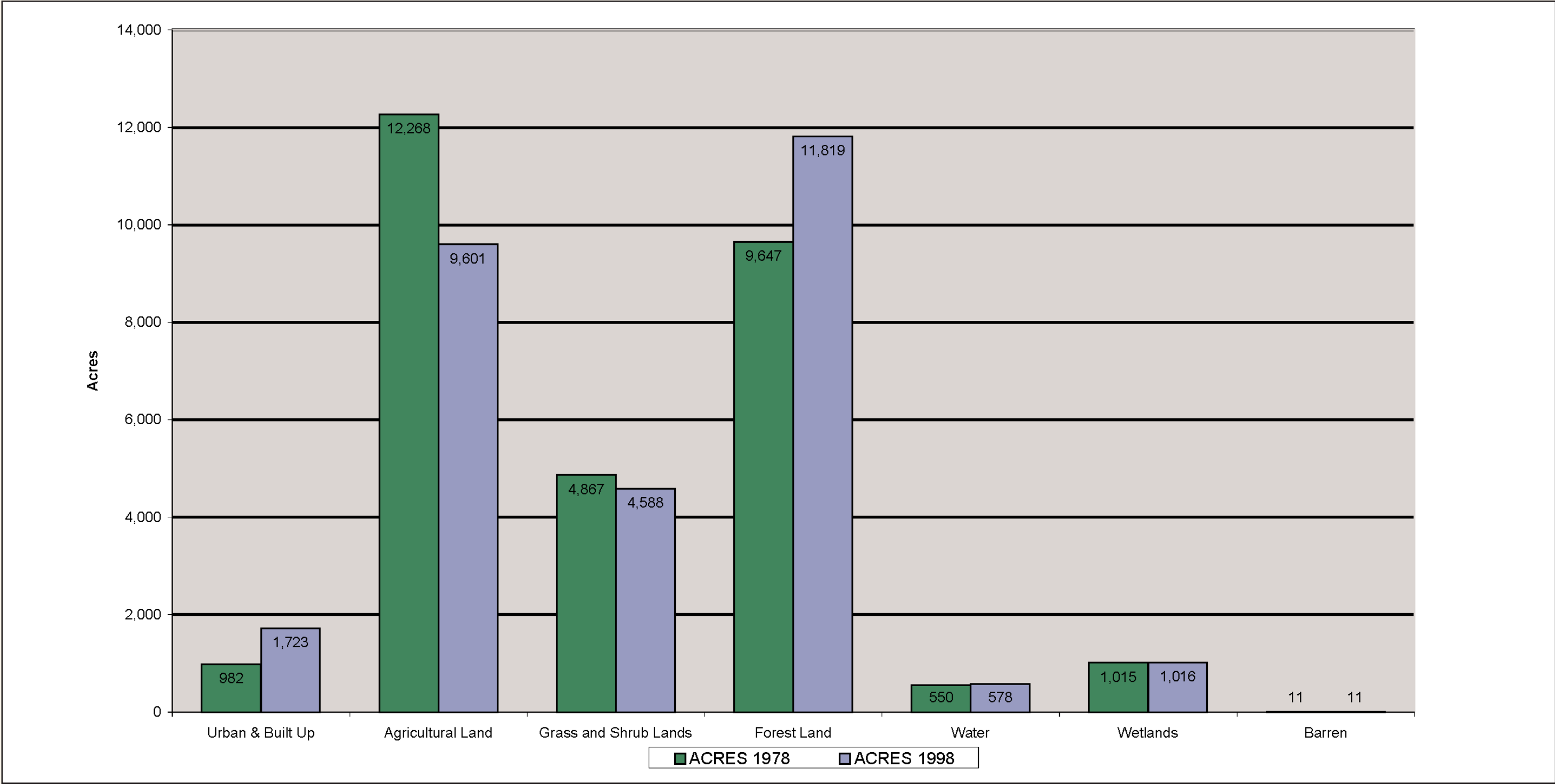
LAND USE 1978



LAND USE 1998



MAJOR LAND USES 1978-1998



ACRES CHANGED

1998 Land Use Codes

1978 Land Use Codes	113	114	13	171	193	194	21	22	23	24	291	31	32	411	413	414	421	422	423	43	52	61	612	Total Acres
12										12.37														12.37
146														7.96										7.96
171	10.96				5.41							25.41	11.89	3.33			8.05				14.09	0.65	0.66	80.44
21	427.37	0.88		15.21	11.39	8.16		315.51	7.05	173.77	133.11	1182.1	267.48	197.04	66.16	126.27	365.59	4.84	172.31	16.42		2.96		3493.59
22	21.40						35.79				8.65	56.59	13.69	2.14	2.87		4.06							145.20
24	6.89						165.97				13.30	103.03	24.07	4.14		4.85	0.22		8.45				1.06	331.97
29												9.25												9.25
31	153.17		7.59	19.86	4.65		369.67	6.69			14.20		1006.3	139.77	130.47	89.09	291.72		195.84		0.72	11.10	12.94	2453.75
32	38.59	1.84		6.06			8.46	11.01		0.27		22.06		127.92	87.59	100.03	68.14		173.63	7.98		1.58	6.36	661.51
411	52.29			10.06	3.17		9.03	6.32			2.85	37.71	0.37		30.46	584.13	52.86		138.79	26.87		1.72		956.62
413	4.15													8.42		0.95			15.06			0.95		29.52
414	15.43						0.59					0.48	2.81	144.05	5.52		2.04				2.56			173.48
421	1.17	0.19		5.54	3.13		7.91					39.40	6.04	14.65	5.92	6.85			2.85					93.64
423					0.31		5.93					8.18	10.17	0.65	3.41	7.71	0.12							36.47
61	4.60						0.40					0.37							0.04					5.40
612							1.99				0.64	9.42				0.69							219.52	232.27
621																					13.33	6.99		20.31
622							7.35																3.37	10.72
Total Acres	736.02	2.91	7.59	56.73	28.07	8.16	613.08	339.53	7.05	187.05	172.11	1494.0	1342.8	650.06	332.40	920.56	792.78	4.84	706.97	53.82	28.13	248.83	21.01	8754.46

* Values may not sum to shown totals due to rounding

Land Use Code Legend

11 Residential 111 Multi-Family, Medium- to High-Rise 112 Multi-Family, Low-Rise 113 Single Family / Duplex 115 Manufactured Home Park 119 Other Residential 12 Commercial, Services, & Institutional 121 Primary / Central Business District 124 Secondary / Neighborhood or Rural Businesses 126 Institutional 13 Industrial 133 Primary Wood Processing 138 Industrial Park 139 Other (miscellaneous / automotive track) 14 Transportation, Communication, Utilities 141 Air Transportation	143 Water Transportation 146 Utilities 17 Extractive 171 Open Pit 173 Wells 19 Open Land and Other 191 Outdoor Cultural 192 Outdoor Public Assembly 193 Outdoor Recreation 194 Cemeteries 21 Cropland 22 Orchards, Bush Fruits, and Vineyards 223 Ornamental Horticulture and Nurseries 23 Confined Feeding Operations 24 Permanent Pasture 29 Other Agricultural Land	291 Farmsteads 31 Grasses and Forbs 32 Shrubs 33 Pine or Oak Opening (prairie) 331 Hardwood Opening 332 Coniferous Opening 41 Broadleaved Forest 411 Northern Hardwoods 412 Central Hardwoods / Oak 413 Aspen-Birch 414 Lowland Hardwoods 42 Coniferous Forest 421 Pine 422 Other Upland Conifer 423 Lowland Conifers 429 Managed Christmas Tree Plantations	43 Mixed Conifer-Broadleaved Forest 44 Clear-Cut Forest 51 Streams and Waterways 52 Lakes 53 Reservoirs 61 Forested (Wooded) Wetlands 612 Shrub Swamps 62 Non-Forested (Non-Wooded) Wetlands 621 Aquatic Bed Wetland 622 Emergent Wetland 623 Flats 625 Open Water 629 Other Non-Forested Wetland 72 Beaches and Riverbanks 73 Sand Dunes / Exposed Bluff
---	---	---	---